

MAP LEGEND

ACCESS



1. Match IDOT Improvements
2. Intersection
3. Residential Access
4. Accommodate School Bus

AESTHETICS



1. Decorative Retaining Wall
2. Fence Preservation
3. Preserve Rural Setting

DRAINAGE



1. Drainage Culverts
2. Flooding

ENVIRONMENT



1. Historic Cabin
2. Agricultural Lands
3. Protect Trees
4. Monuments

SAFETY



1. Sight Distance
2. Roadway Curve / Hill
3. Accident Occurrence

FLEMING ROAD INITIAL PUBLIC MEETING OPEN HOUSE

From Country Club Road to Illinois Route 120
McHenry County Division of Transportation

Tuesday, March 23, 2010
4:00 P.M. to 7:00 P.M.
McHenry County Administration Building
Conference Rooms A & B
667 Ware Road
Woodstock, Illinois



QUESTIONS, COMMENTS AND INFORMATION

We invite you to submit comments about the project at the public meeting or by mail to:

Walter Dittrich, P.E.
Design Manager
McHenry County DOT
16111 Nelson Road
Woodstock, IL 60098



Comments are welcome at any time, but to be included in this Initial Public Meeting record, comments must be received by April 9, 2010.

All material from the Public Meeting will be available on the project website or may be requested from the County at the address to the left. Questions and requests regarding the project should be directed to Walter Dittrich, McHenry County DOT Design Manager at 815.334.4980.

You may also submit input through the project website at:

www.FlemingRoad.info



www.FlemingRoad.info



Fleming Road Initial Public Meeting Open House

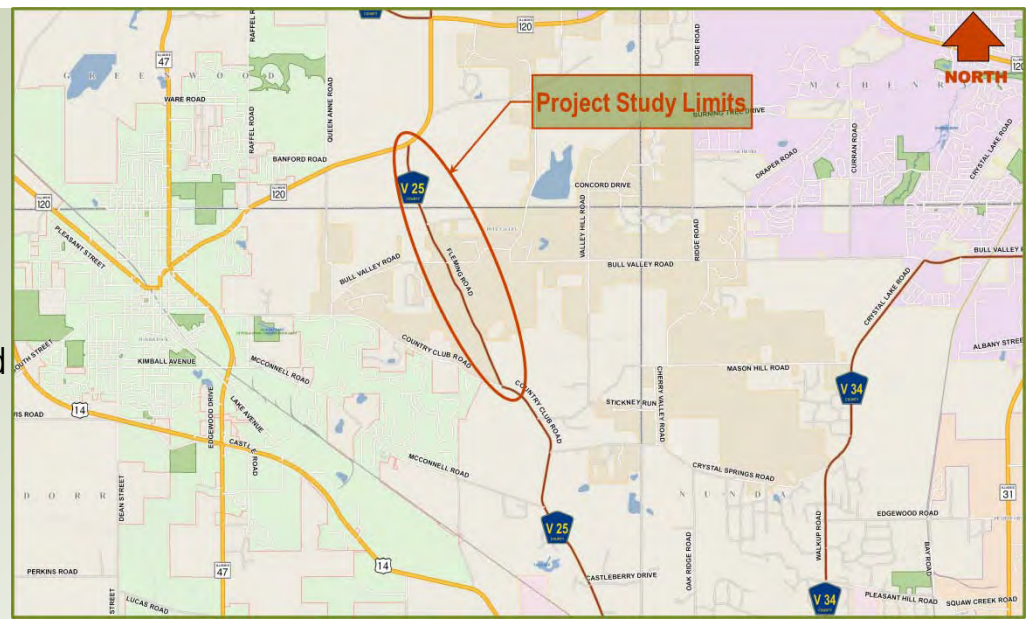
Country Club Road to Illinois Route 120

We Want To Hear From You!

Your comments are important to the project process. We are seeking your input on the **Potential Project Needs**.

Please review the exhibits in the main room to review the information gathered to date and provide your input.

www.FlemingRoad.info

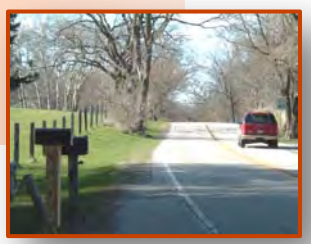


Potential Project Needs:

- Based on field observations, the Project Team has completed a preliminary assessment of the Potential Project Needs for Fleming Road.
- The Potential Project Needs have been organized into five basic categories and are listed below.
- Please review the information and provide your comments and input on any additional Project Needs that may not yet have been identified.

ACCESS

- Driveways
- Side Streets
- Intersections



ENVIRONMENT

- Trees
- Wetlands / Stormwater
- Agricultural Lands
- Historic / Cultural



AESTHETICS

- Landscaping
- Fencing
- Rural Setting



SAFETY

- Hills & Curves
- Sight Distance
- Accident Experience



DRAINAGE

- Flooding
- Stormwater
- Field Tiles



OTHERS

- "New Input From the Public"



Project Schedule:

- The project schedule is approximately 36 months long.
- The project will have three phases: 1) Study Phase, 2) Design Phase, and 3) Construction Phase
- The project is currently in the early Study Phase – Analyzing Existing. This task includes: data collection, field surveys, auditing existing conditions, and soliciting community input.

Note: Schedule is subject to project readiness and funding availability.

Project Goal:

The goal of the project is to develop a preferred plan for Fleming Road which replaces the deteriorated pavement, improves safety, maintains the character of the corridor, while minimizing the disturbance to adjacent property owners.

This goal will be achieved by implementing a public outreach plan that will afford all project stakeholders an opportunity to provide input at key project milestones. Project stakeholders include residents, property owners, local officials, townships, and local police and fire departments. **Stakeholder input is key to developing the best possible plan for Fleming Road.**